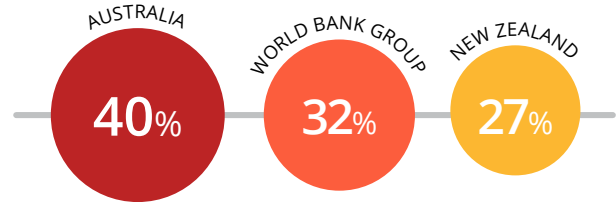




# Tuvalu

Tuvalu is an upper middle-income country and a least developed country as well as a Small Island Development State (SIDS) with a GNI of 4,970 USD per capita (2017) and a population of 11,000 inhabitants (2017). In the 2018 Monitoring Round, Tuvalu reported on 15 million USD in development co-operation flows.

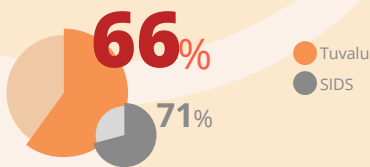
## Major development partners in the 2018 Monitoring Round (by reported disbursements in 2017)



## 1. National development planning and results orientation

### Overall quality of national results framework

High-quality, inclusive and results-oriented development strategies are critical for countries' ownership over their development and the implementation of the 2030 Agenda and the Sustainable Development Goals (SDGs). The quality of national development planning in Tuvalu is **medium (66%)**.



### Extent of use of country-owned results frameworks by development partners

Development partner alignment to country-led development priorities is at the heart of country ownership. Global Partnership monitoring assesses whether interventions: draw objectives from national development strategies; draw indicators from country results frameworks; use government data and statistics for monitoring; and involve government in evaluations. The first three elements provide the official data to report on SDG indicator 17.15.1. In Tuvalu, development partners align to country priorities to a **medium extent (53%)** - SDG indicator 17.15.1).

### The national development strategy and results framework...

... defines priorities, targets and indicators



... includes budget or costing information



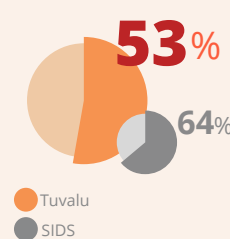
... aligns to SDGs



Regular progress reports are available



SDG 17.15.1



Objectives



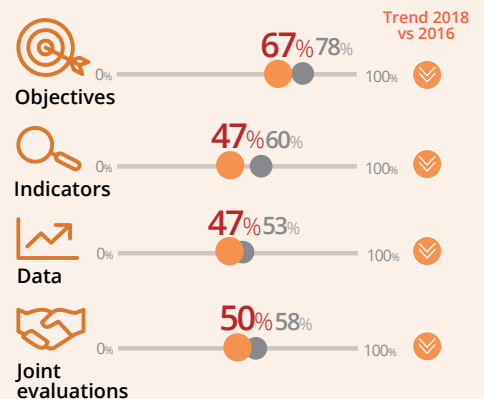
Indicators



Data



Joint evaluations

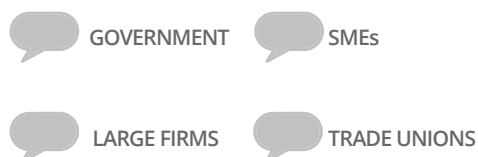


## 2. Multi-stakeholder engagement

Recognising that successful development efforts require the inclusive and equitable participation of all actors, the 2030 Agenda calls for collective action by the whole of society. Global Partnership monitoring examines the engagement of civil society and the private sector from both the perspective of the government and representatives of these stakeholder groups.

### Quality of public-private dialogue

In the 2018 Monitoring Round, government representatives and representatives of large firms, SMEs and trade unions in Tuvalu did not assess the quality of public-private dialogue.



Effective Consolidating Emerging Weak Not assessed

### Enabling environment for civil society organisations...

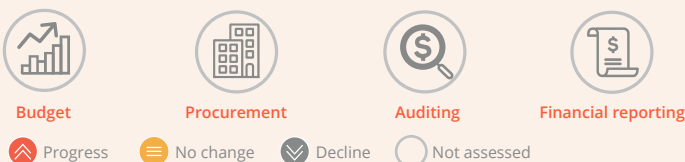
... was not assessed by government representatives, civil society organisations and development partners in the 2018 Monitoring Round in Tuvalu.



### 3. Quality and use of public financial management systems

#### Strengthening public financial management systems

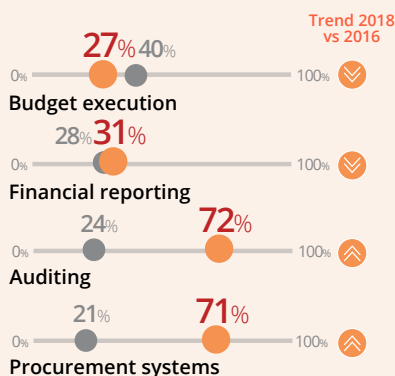
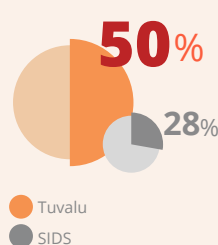
Strong public financial management (PFM) systems are an essential element of good governance and vital to achieving development goals. Tuvalu **did not assess** progress in the quality of its PFM systems.



#### Development partners' use of country systems

Development partners' use of these systems to deliver co-operation both lowers transaction costs but also helps to accelerate their strengthening. In Tuvalu, use of country PFM systems **decreased** from 57% in 2016 to 50% in 2018.

#### Overall use of country systems



#### Systems to track and make public allocations for gender equality and women's empowerment



Adequate and effective financing is essential to achieve gender equality and to empower all women and girls. Tuvalu has **not assessed** whether elements of a system to track and make public allocations for gender equality and women's empowerment are in place (SDG indicator 5.c.1).

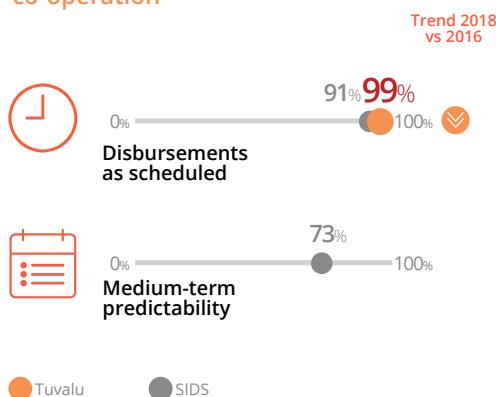


### 4. Predictability and forward planning

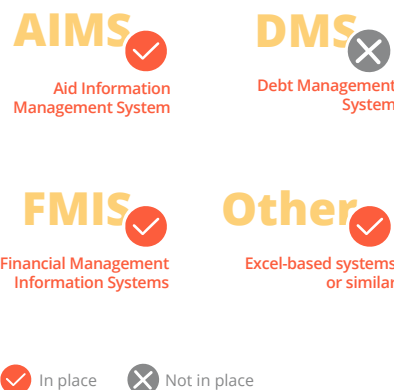
High-quality and timely information on development co-operation helps governments in planning and managing resources for results and can guide development partners in coordinating their support with other providers, as to avoid fragmentation and duplication of efforts.

Annual predictability of development co-operation is **high**, with 99% of co-operation disbursed as scheduled. Medium-term predictability was not assessed in Tuvalu in the 2018 Monitoring Round.

#### Predictability of development co-operation



#### Systems to track development co-operation information in Tuvalu



### 5. Mutual accountability mechanisms

Mutual accountability underpins the efforts of development actors to meet joint commitments, improve how they work together and increase their development effectiveness. Mutual accountability mechanisms are made up of multiple, reinforcing components that can help enhance transparency and accountability at country level. Global Partnership monitoring defines and assesses mutual accountability against five components. Tuvalu has **one out of five** components in place.

